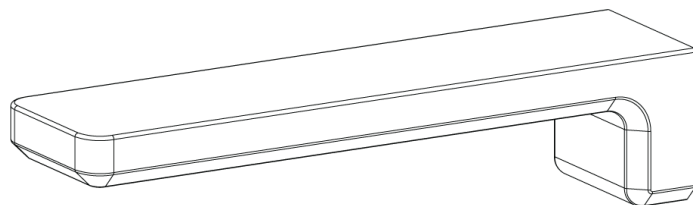


# Wall Spout

Ãmio 01-4705/ 01-4682  
Rere 01-3708



\*Illustrations may not reflect actual product shape

## Installation Guide

### IMPORTANT

Please read all of the instructions before installation

Use of this product in non-domestic applications voids warranty.  
All pipe work must be thoroughly flushed prior to the installation of the mixer.  
NEFA inline filters must be installed on both hot and cold supplies.  
Do not remove the ceramic cartridge from the mixer when installing.  
Damage caused by hydrostatic testing is not covered by our warranty.



#### THE METHVEN GUARANTEE

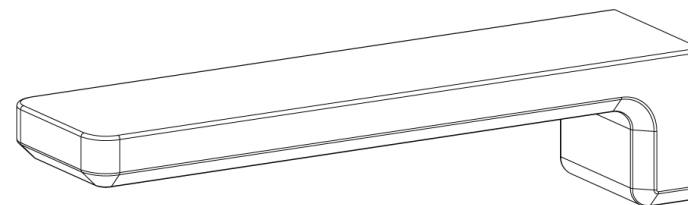
The warranty statement shall apply to all tapware & showers supplied by Methven  
For more information visit [www.methven.com](http://www.methven.com)

THIS WARRANTY ISSUED BY: Methven Australia Pty Ltd, Melbourne Australia

We recommend that this product is installed by a licensed plumber.

# Wall Spout

Ãmio 01-4705/ 01-4682  
Rere 01-3708



\*Illustrations may not reflect actual product shape

## Installation Guide

### IMPORTANT

Please read all of the instructions before installation

Use of this product in non-domestic applications voids warranty.  
All pipe work must be thoroughly flushed prior to the installation of the mixer.  
NEFA inline filters must be installed on both hot and cold supplies.  
Do not remove the ceramic cartridge from the mixer when installing.  
Damage caused by hydrostatic testing is not covered by our warranty.



#### THE METHVEN GUARANTEE

The warranty statement shall apply to all tapware & showers supplied by Methven  
For more information visit [www.methven.com](http://www.methven.com)

THIS WARRANTY ISSUED BY: Methven Australia Pty Ltd, Melbourne Australia

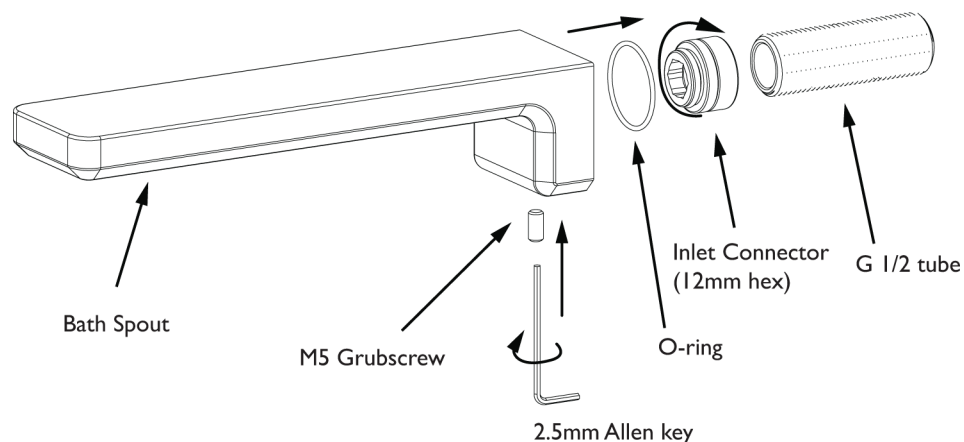
We recommend that this product is installed by a licensed plumber.

## Technical Specifications

Inlet Connections: All 1/2" BSP

Operating Pressure: 150kPa - 500kPa

Operating Temperatures: Recommended hot water supply 50°C, maximum 70°C. AS 3500 requires all hot water supplies to any sanitary fitting to be tempered to 50°C.



NOTE: The G 1/2 tube is only used for 'Female Thread Outlet' in wall and should be cut to size to suit installation.

SEP 2009

MA433410

### THE METHVEN GUARANTEE

The warranty statement shall apply to all tapware & showers supplied by Methven  
For more information visit [www.methven.com](http://www.methven.com)

THIS WARRANTY ISSUED BY: Methven Australia Pty Ltd, Melbourne Australia

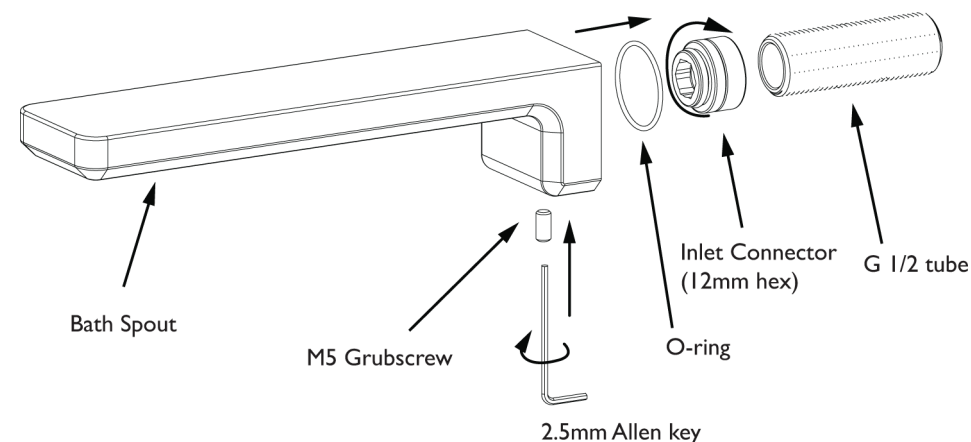
We recommend that this product is installed by a licensed plumber.

## Technical Specifications

Inlet Connections: All 1/2" BSP

Operating Pressure: 150kPa - 500kPa

Operating Temperatures: Recommended hot water supply 50°C, maximum 70°C. AS 3500 requires all hot water supplies to any sanitary fitting to be tempered to 50°C.



NOTE: The G 1/2 tube is only used for 'Female Thread Outlet' in wall and should be cut to size to suit installation.

SEP 2009

MA433410

### THE METHVEN GUARANTEE

The warranty statement shall apply to all tapware & showers supplied by Methven  
For more information visit [www.methven.com](http://www.methven.com)

THIS WARRANTY ISSUED BY: Methven Australia Pty Ltd, Melbourne Australia

We recommend that this product is installed by a licensed plumber.