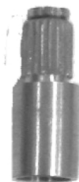


### Kiri Standard Spindle & Handle Assembly Set up



### SPARE PARTS (NOT INCLUDED)

Spindle Handle  
Extension 04-9837

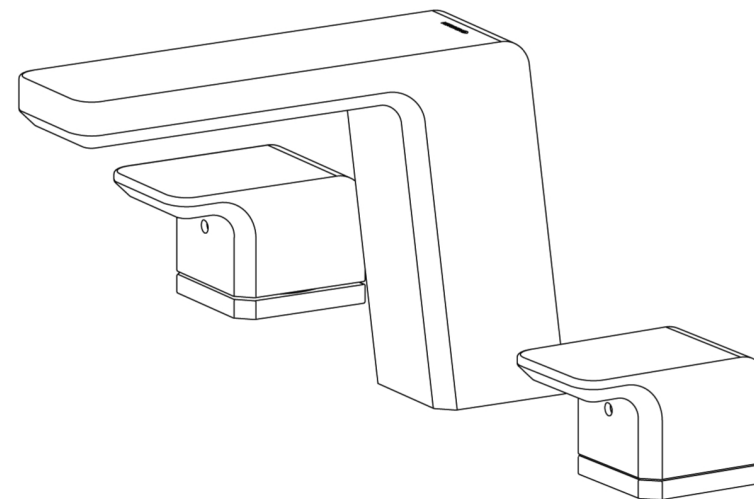


Spindle Flange M x F  
Extension 04-9875



# Kiri 3 Hole Basin Set

01-5603



## Installation Guide

### IMPORTANT

Please read all of the instructions before installation

Use of this product in non-domestic applications voids warranty.  
All pipe work must be thoroughly flushed prior to the installation of the mixer.  
NEFA inline filters must be installed on both hot and cold supplies.  
Damage caused by hydrostatic testing is not covered by our warranty.



SEP 2008

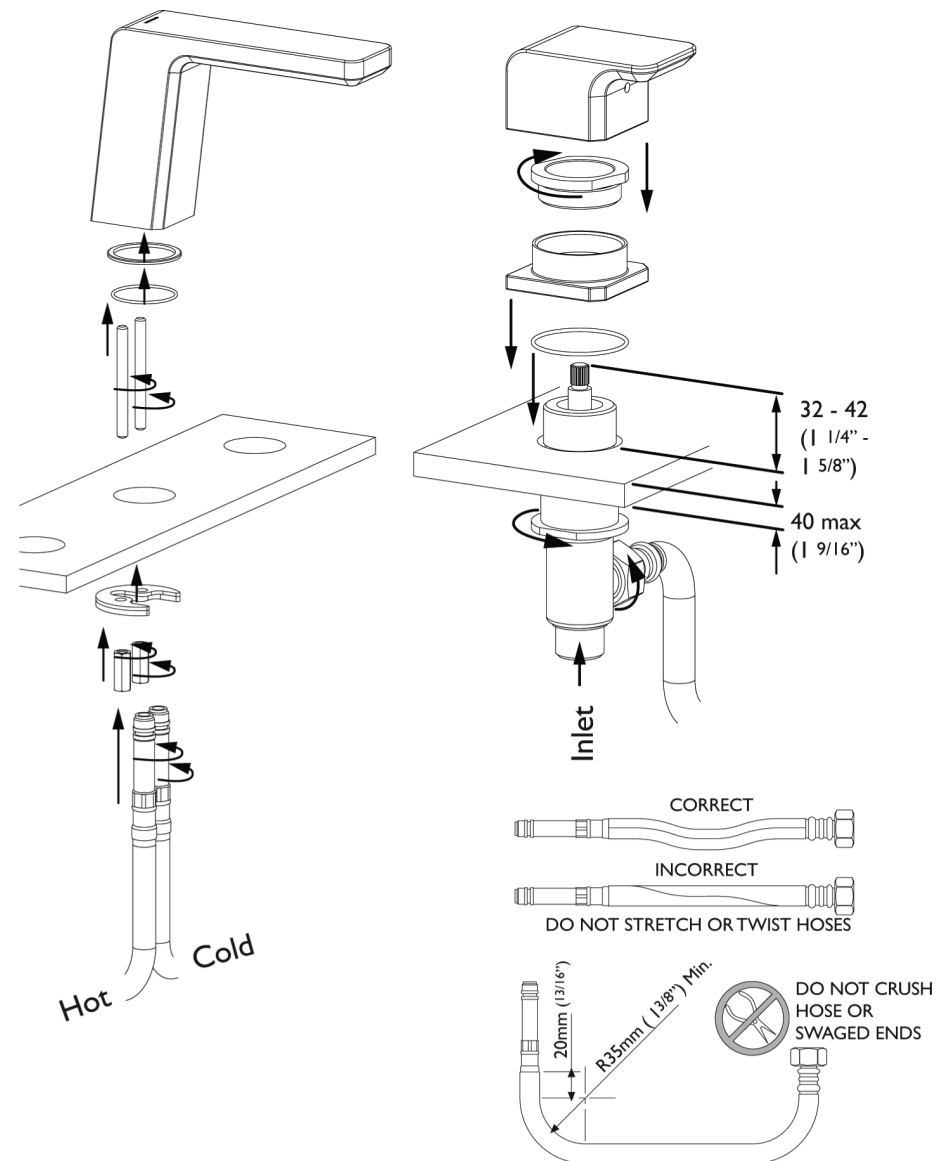
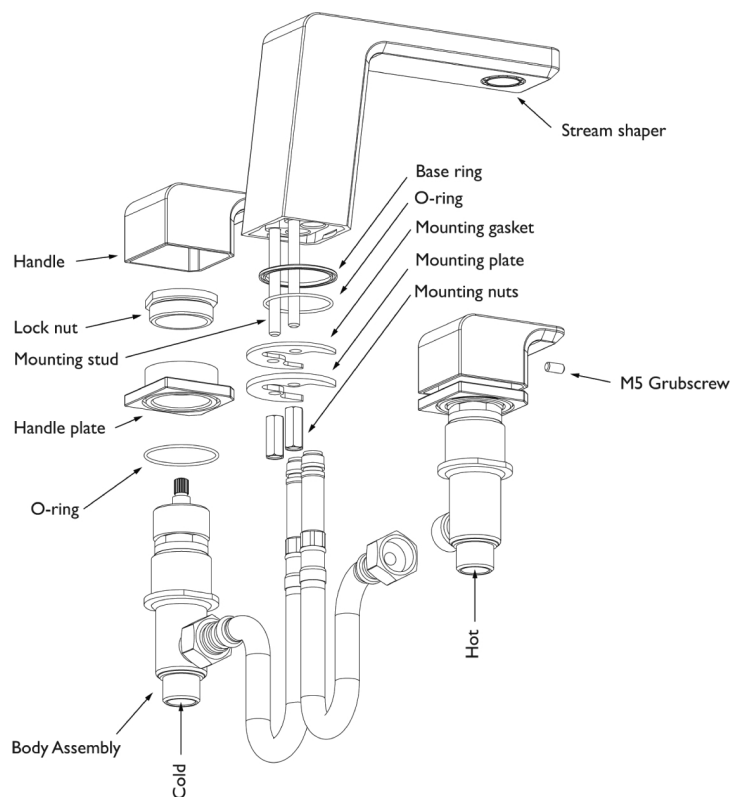
MA015603

## Technical Specifications

Inlet Connections: All 1/2" BSP

Operating Pressure: 150kPa - 500kPa

Operating Temperatures: Recommended hot water supply 50°C, maximum 70°C. AS 3500 requires all hot water supplies to any sanitary fitting to be tempered to 50°C.



We recommend that this product is installed by a licensed plumber.

### THE METHVEN GUARANTEE

The warranty statement shall apply to all tapware & showers supplied by Methven  
For more information visit [www.methvenaustralia.com.au](http://www.methvenaustralia.com.au)

THIS WARRANTY ISSUED BY: Methven Australia Pty Ltd, Melbourne Australia