

Warranty Information

Proof of purchase will be required.

The guarantee does not cover faults or damage caused by incorrect installation and/or maintenance, ordinary wear and tear, water composition, etc.

*Please see www.deva-uk.com for full terms and conditions of warranty

Cleaning

Your product has a high-quality finish and should be treated with care to preserve the visible surfaces. Never use abrasives or abrasive cleaning agents to clean this product clean regularly with contamination free warm water and a damp soft cloth. Do not use products containing chlorine bleach or hydrochloric acid as these can damage the product.

We have a policy of continuous improvement and reserve the right to change specifications without notice.

METHVEN UK LIMITED
METHVEN EXPERIENCE CENTRE
3/3A STONE CROSS COURT
YEW TREE WAY
GOLBORNE
WARRINGTON
WA3 3JD
UNITED KINGDOM

TEL: 0800 195 1602
FAX: +44 (0) 1942 680 190
EMAIL: sales@uk.methven.com
www.deva-uk.com
www.methven.com

INST- BFW001, BFW001BK
V1 -23.04.2024

Slim Bath Filler and Press Top Waste

Product code:

Chrome: BFW001

Matte Black: BFW001BK

Installation Instructions & Maintenance Guide

Technical Specification

Working Pressure:

Min: 0.5 Bar

Max: 5.0 Bar

Operating Temperature:

Hot: 65°C

Cold: 5°C

Inlet Connections:

1½"

Features:

- Connects to valve or diverter to operate bath filler
- Click to raise waste mechanism
- Available in Chrome and Matte Black




Deva™ by METHVEN

If you need any further help, please don't hesitate to contact our customer care team on 0800 195 1602

PLEASE RETAIN THIS DOCUMENT FOR FUTURE REFERENCE

IMPORTANT: Please read all of the instructions before installation.

Methven recommends this product is installed by a competent person in compliance with all relevant regional regulations.

Remove all packaging and check the components for damage before starting installation.

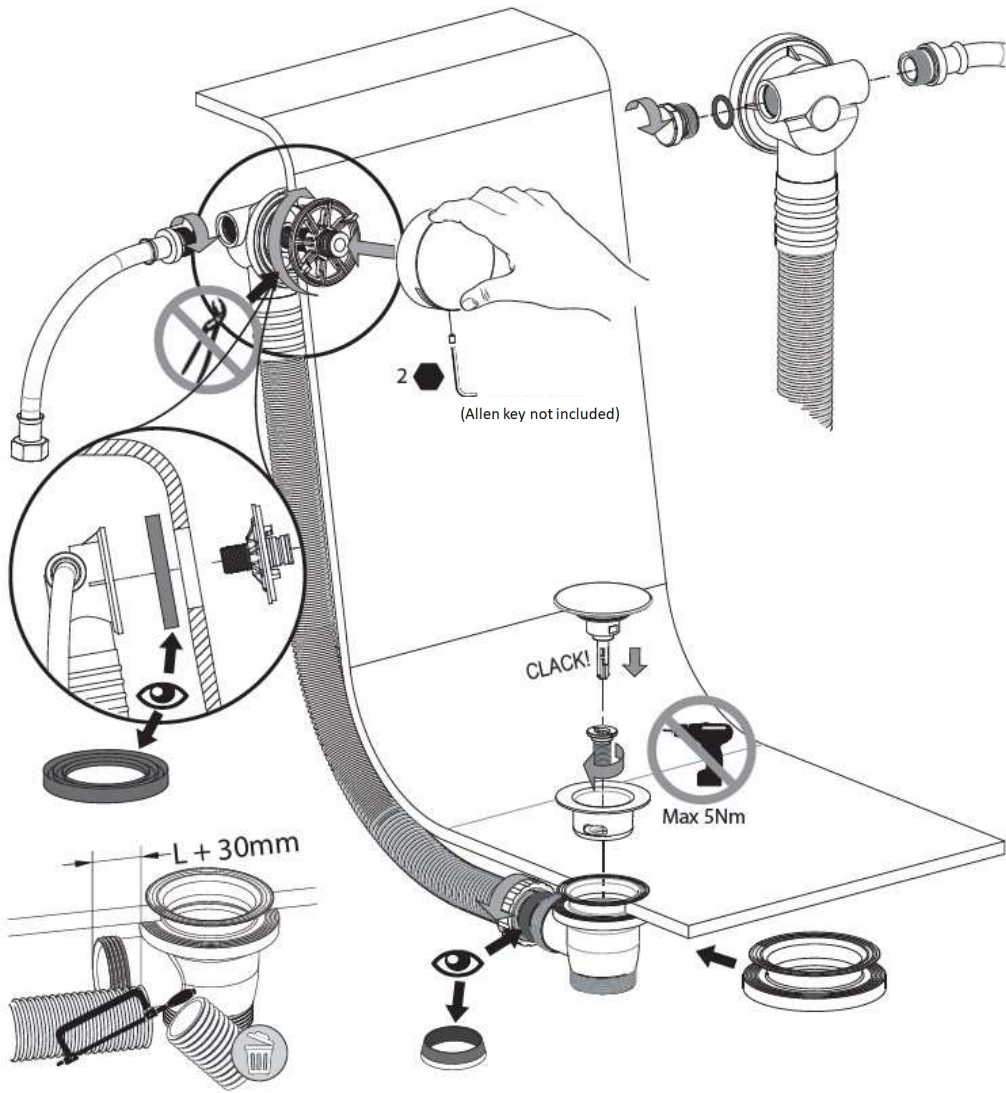
This product must not be modified in any way as this will invalidate the guarantee.

It is the responsibility of the installer to ensure a waterproof seal is achieved, after installation all connections must be checked for leaks.

All outlets used primarily for personal hygiene shall deliver water at a safe temperature as per regional regulations.

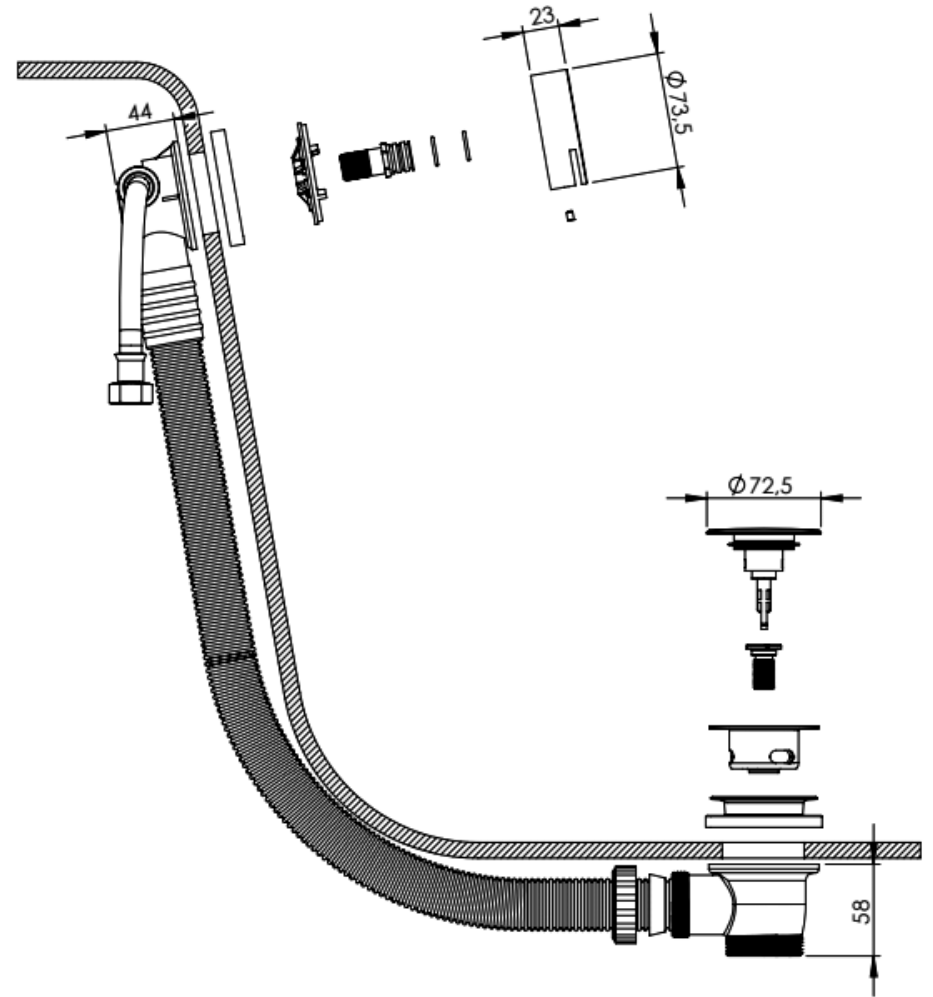
Before commencing installation of the new product, ensure that the system has been flushed to remove any debris, which could cause damage to the valves and invalidate the warranty.

Installation Diagram:

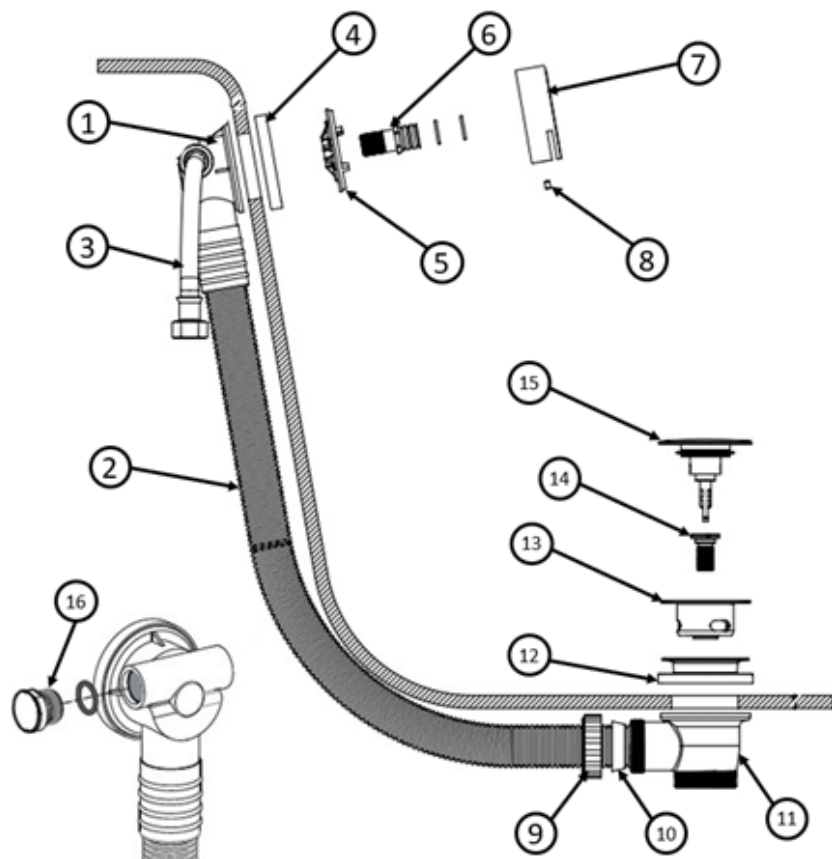


Line Drawing:

Unit of measure = mm's



Exploded Diagram:



1	Filler body	5	Filler body face	9	Waste body nut	13	Waste flange
2	Flexible overflow pipe	6	Filler body screw	10	Waste body chamfer seal	14	Waste body screw
3	Flexible connector	7	Outlet cover	11	Waste body	15	Clicker plug
4	Filler body washer	8	Grub screw	12	Waste flange seal	16	Filler body blanking cap

Installation:

1. Push the filler body into the flexible overflow pipe.
2. Attach the flexible connector to the appropriate side the water will be connected to in your installation.
Screw the filler body blanking cap on to the opposite side of the filler body to close off. Tighten to create a watertight seal.
3. Offer up the filler body and filler body washer to the outside of the bath overflow hole and check fit.
4. Apply silicone sealant to the underside of the filler body face. Attach the filler body and washer to the outside of the bath, with the filler face on the inside of the bath use the filler body screw to assemble. Do not over tighten or use excessive pressure to secure.
5. Attach the waste flange seal to the waste hole of the bath as shown in the diagram – the seal will sit on the inside and outside of waste hole in the bath. Use silicone for a watertight fit if deemed necessary.
6. Hold the waste body to the outside of the bath, push the waste flange through the waste flange seal on the inside of the bath and connect to the waste using the waste body screw to hold it all in place for now.
7. Attach the outlet cover to the filler body screw with the grub screw. Make sure the outlet slot on the side of the outlet cover is pointing down towards the waste inside the bath.
8. Align the flexible overflow pipe to the side of the waste body (as shown in the bottom left of the installation diagram below) to check for a close fit to the contour of the bath as shown in the line drawing. It is important to not have excessive pipe sagging underneath the bath as water can collect here and will not flow out of the waste efficiently. Make sure to leave 30mm excess length on the overflow pipe to sit inside the waste body connection – refer to the diagram.
9. Once cut to length place the waste body nut over the overflow pipe, followed by the waste body chamfer seal and then insert the overflow pipe into the waste body. Push the seal into the opening and tighten the waste body nut to the waste body, clamping the seal around the overflow pipe to create a watertight seal.
10. Now tighten the waste body screw, be sure not to over tighten.
11. Connect the clicker plug to the waste body screw by pushing it down all the way until it stops. Check that it is fully inserted and it closes off the bath waste.
12. Push down again on the plug until you hear it click, release and the plug should open.