

MAKU SATINJET HANDSET INSTALLATION GUIDE

TECHNICAL SPECIFICATIONS

Operating pressure: Min 0.35 Bar, Max 5 Bar.
Operating temperature : Max 70°C
Inlet connections : All ½" BSP.

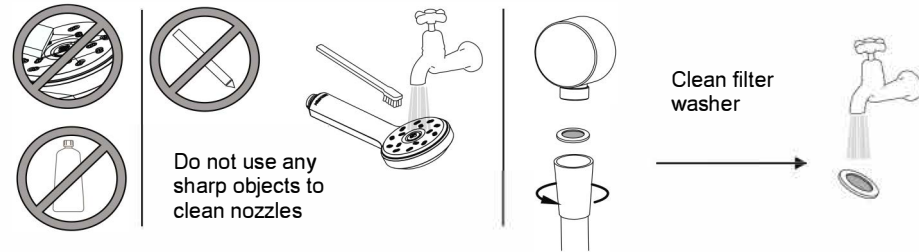
Notes:

After installation all connections must be checked for leaks.

All installations must be carried out in compliance with relevant water regulations.

Cleaning

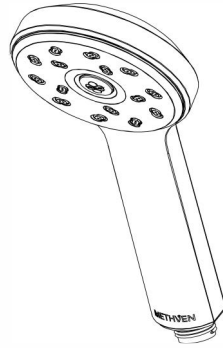
Water contains lime which remains on the surface after the water has evaporated. These lime deposits can be prevented from forming by wiping immediately after use.



Brooklands Mill

English Street

Lancashire



METHVEN

Satinjet Single Function Shower Kit Installation and Maintenance Guide



Please retain this document for future reference.

This product should be fitted in compliance with Water Regulations, by a qualified plumber.

Use only a clean damp cloth to maintain the surface finish, use of abrasive cleaning materials will invalidate your guarantee.

Customer Care Line
0800 1951602

Website



Select location for kit, ensuring no wiring or pipework in the wall can be damaged, also that when the slider bracket is positioned at the top of the rail, the hose is not over extended.

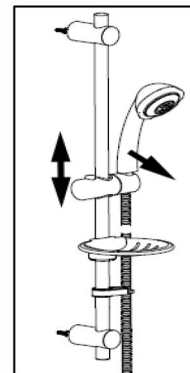
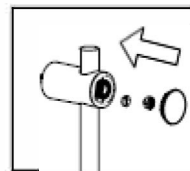
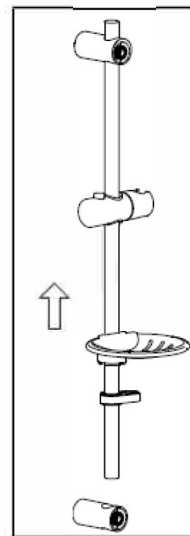
The location should also ensure that during use, the water flow is directed toward a suitable location, so as not to cause water damage.

Remove the caps from the end brackets using a sharp blade, taking care not to damage the product.

Mark the required position of the end brackets on the wall (the centre to centre dimension is variable, max 600mm)

Once marked, drill hole and fit wall plugs.

Using screws provided, fit end brackets in desired location.



Once both end brackets have been secured, push empty rail through end bracket, until end is part way between end brackets, then install slider, soap dish and hose retainer.

When rail components have been installed, push the rail through the second end bracket.

To secure the rail, place the small black rubber stopper into the threaded hole in the front of the end bracket, then fit the small brass screw and tighten using a screw driver, until tight against the rail, do not overtighten, then fit chrome caps.

Fit hose seals to both ends of shower hose.

Thread the hose through the hole in the hose retainer.

Screw the cone end of the hose to the handset.

Screw the opposite end of the hose to the mixer.

Locate the hose cone into the slide bracket, ensuring that it is fully inserted.

If the cone is not fully inserted, the handset may fall out during use.

To adjust the angle of the handset, gently move the handset just above the slider.