

Warranty Information

Proof of purchase will be required.

The guarantee does not cover faults or damage caused by incorrect installation and/or maintenance, ordinary wear and tear, water composition, etc.

*Please see www.methven.com for full terms and conditions of warranty

Cleaning

Your product has a high-quality finish and should be treated with care to preserve the visible surfaces. Never use abrasives or abrasive cleaning agents to clean this product clean regularly with contamination free warm water and a damp soft cloth. Do not use products containing chlorine bleach or hydrochloric acid as these can damage the product.

We have a policy of continuous improvement and reserve the right to change specifications without notice.

METHVEN UK LIMITED
METHVEN EXPERIENCE CENTRE
3/3A STONE CROSS COURT
YEW TREE WAY
GOLBORNE
WARRINGTON
WA3 3JD
UNITED KINGDOM
INST-PABMCP
28/02/2023

TEL: 0800 195 1602
FAX: 0844 406 8690
EMAIL: sales@uk.methven.com
www.deva-uk.com
www.methven.com

Paxton Basin Mixer

PABMCP

Installation Guide

Technical Specification

Operating Pressure

Min: 0.1 Bar

Max: 5.0 Bar

Operating Temperature

Hot: 65°C

Cold: 5°C

Inlet Connections

1/2" BSP

Features

- Suitable For A Single Hole Basin
- Single Lever Operation
- Long Life 35mm Ceramic Cartridge
- Fitted With 4 Litre Per Minute Directional Flow Regulator
- Complete With M10*1*400mm, G1/2" Stainless Steel Flexible Hoses
- Includes Press Top Waste
- Tap Height: 147.5mm



METHVEN
www.methven.com EST 1886

Please read all of the instructions before installation.

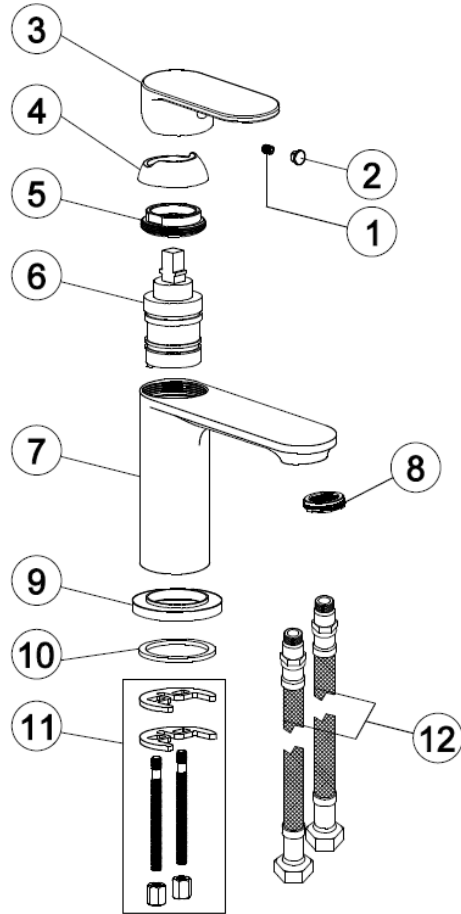
General

Methven recommends this product is installed by a competent person in compliance with all relevant regional regulations.

After installation, all connections must be checked for leaks.

All outlets used primarily for personal hygiene shall deliver water at a safe temperature as per regional regulations.

It is the responsibility of the installer to ensure a waterproof seal is achieved.



Item Number	Item Name
1	Handle Screw
2	Indice
3	Handle
4	Cartridge Cover
5	Cartridge Nut
6	Cartridge
7	Tap Body
8	Neoperl Aerator
9	Base Ring
10	Rubber Washer
11	Fixing Kit - Including, Fixing Bolts, Rubber & Metal Horseshoe Washers & Fixing Nuts
12	Flexi tails

Tap Installation Instructions

- 1) Fit the base ring onto the bottom of the tap body. The raised edge of the base ring sits inside the lip on the base of the tap with the rubber washer facing the basin.
- 2) Insert the fixing bolts into the bottom of the tap, with the slot facing out and using a flat bladed screw-driver tighten this up.
- 3) Screw the flexible tails into the bottom of the tap, by hand, until tight. Do not use PTFE tape, or similar, on the threads.
- 4) Feed the tails and fixing bolt into the hole in the basin, ensuring that the base ring and rubber washer are seated correctly and fully covering the hole.
- 5) From the underside of the basin feed the rubber horseshoe shaped washer over the fixing bolt followed by the metal one. Place the nut over the fixing bolt and tighten until the tap is fixed on the basin. Do not over-tighten.
- 6) Connect the hot and cold feeds to the water supply.
- 7) Reinststate the water supply and test for leaks.

Waste Installation Instructions

- 8) Remove the locking nut, white plastic washer and smaller of the two rubber washers. Push the larger of the rubber washers up to the waste flange and insert into the hole for the waste in the basin. Please note sealant can be used in addition to, or instead of, the washers depending on the requirements of the installation or preferences of the installer.
- 9) On the underside of the basin feed the smaller rubber washer and white plastic washer back onto the bottom of the waste tail and using the locking nut, tighten until the waste is secure. As above sealant can also be used.
- 10) Attach the trap/waste pipework to the bottom of the waste body and test for leaks.

Line Drawing

