

## 1 1/4" Press Top Basin Waste - Unslotted

### WST12CP, WST12BB, WST12BN, WST12GM, WST12BK

#### Installation Instructions & Maintenance Guide

---

This product should be fitted in compliance with Water Regulations, by a qualified plumber.

#### Care & Cleaning

Your product has a high-quality finish and should be treated with care to preserve the visible surfaces. Never use abrasives or abrasive cleaning agents to clean this product clean regularly with contamination free warm water and a damp soft cloth. Do not use products containing chlorine bleach or hydrochloric acid as these can damage the product.

#### Warranty Information

Proof of purchase will be required.

The guarantee does not cover faults or damage caused by incorrect installation and/or maintenance, ordinary wear and tear, water composition, etc.

\*Please see [www.deva-uk.com](http://www.deva-uk.com) for full terms and conditions of warranty

**We have a policy of continuous improvement and reserve the right to change specifications without notice.**

METHVEN UK LIMITED  
METHVEN EXPERIENCE CENTRE  
3/3A STONE CROSS COURT  
YEW TREE WAY  
GOLBORNE  
WARRINGTON  
WA3 3JD  
UNITED KINGDOM

TEL: 0800 195 1602  
FAX: +44 (0) 1942 680 190  
EMAIL: [sales@uk.methven.com](mailto:sales@uk.methven.com)  
[www.deva-uk.com](http://www.deva-uk.com)  
[www.methven.com](http://www.methven.com)



## 1 1/4" Press Top Basin Waste - Unslotted

### WST12CP, WST12BB, WST12BN, WST12GM, WST12BK

#### Installation Instructions & Maintenance Guide

---

This product should be fitted in compliance with Water Regulations, by a qualified plumber.

#### Care & Cleaning

Your product has a high-quality finish and should be treated with care to preserve the visible surfaces. Never use abrasives or abrasive cleaning agents to clean this product clean regularly with contamination free warm water and a damp soft cloth. Do not use products containing chlorine bleach or hydrochloric acid as these can damage the product.

#### Warranty Information

Proof of purchase will be required.

The guarantee does not cover faults or damage caused by incorrect installation and/or maintenance, ordinary wear and tear, water composition, etc.

\*Please see [www.deva-uk.com](http://www.deva-uk.com) for full terms and conditions of warranty

**We have a policy of continuous improvement and reserve the right to change specifications without notice.**

METHVEN UK LIMITED  
METHVEN EXPERIENCE CENTRE  
3/3A STONE CROSS COURT  
YEW TREE WAY  
GOLBORNE  
WARRINGTON  
WA3 3JD  
UNITED KINGDOM

TEL: 0800 195 1602  
FAX: +44 (0) 1942 680 190  
EMAIL: [sales@uk.methven.com](mailto:sales@uk.methven.com)  
[www.deva-uk.com](http://www.deva-uk.com)  
[www.methven.com](http://www.methven.com)



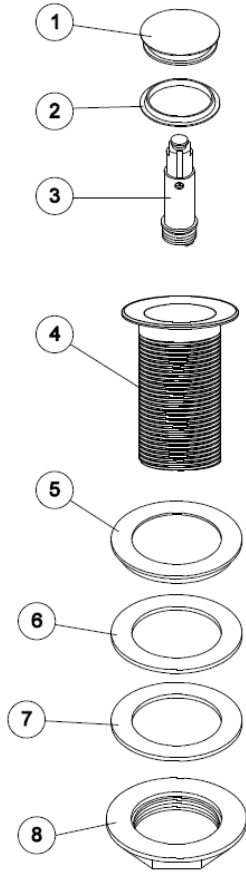
## INSTALLATION

Sealant can be used on all joints to aide in sealing.

1) Remove the locking nut, white plastic washer and smaller of the two rubber washers. Push the larger of the rubber washers up to the waste flange and insert into the hole for the waste in the basin. Please note sealant can be used in addition to, or instead of, the washers depending on the requirements of the installation or preferences of the installer.

2) On the underside of the basin feed the smaller rubber washer and white plastic washer back onto the bottom of the waste tail and using the locking nut, tighten until the waste is secure. As above sealant can also be used.

3) Attach the trap/waste pipework to the bottom of the waste body and test for leaks



In order to fill the basin, the button in the middle of the waste needs to be pressed down.  
To release water press the button **to allow drainage**.

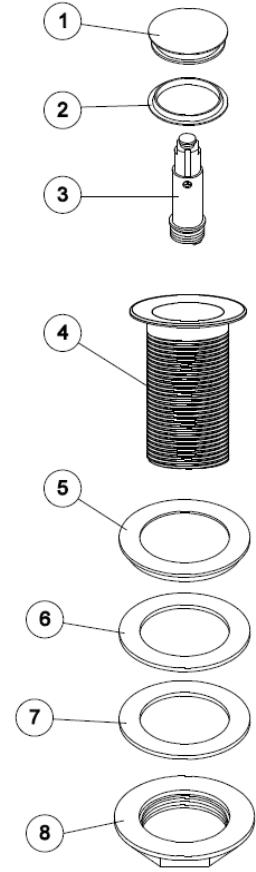
## INSTALLATION

Sealant can be used on all joints to aide in sealing.

1) Remove the locking nut, white plastic washer and smaller of the two rubber washers. Push the larger of the rubber washers up to the waste flange and insert into the hole for the waste in the basin. Please note sealant can be used in addition to, or instead of, the washers depending on the requirements of the installation or preferences of the installer.

2) On the underside of the basin feed the smaller rubber washer and white plastic washer back onto the bottom of the waste tail and using the locking nut, tighten until the waste is secure. As above sealant can also be used.

3) Attach the trap/waste pipework to the bottom of the waste body and test for leaks



In order to fill the basin, the button in the middle of the waste needs to be pressed down.  
To release water press the button **to allow drainage**.