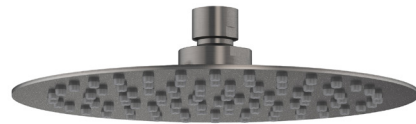
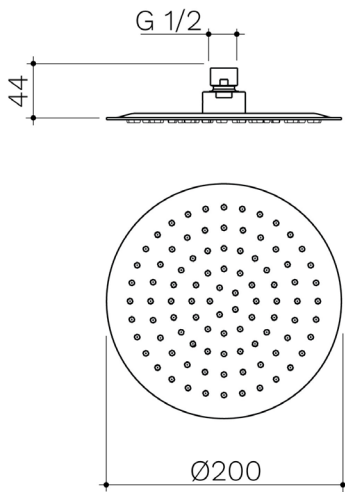


200MM ROUND SLIMLINE OVERHEAD - GUNMETAL



CONSTRUCTION: Brass
SUPPLY: Suitable For Low Pressure Systems
INLET CONNECTIONS: ½" BSP
WORKING PRESSURES: 0.3 - 5.0 bar
CARTRIDGE/VALVE TYPE: N/A

- Premium Quality Flow Regulators Deliver A Consistent Flow Of Water Under A Range Of Water Pressures
- Regulated To 8 L/Min
- Easy Clean Silicone Nozzles

HEAH1oGM

Gunmetal

Open Outlet Flow (Bar - l/min)

BAR	0.1	0.3	0.5	1.0	2.0	3.0	4.0	5.0
HANDSET FLOW	3.9	5.5	6.8	8.1	7.8	7.8	8	8.2



2108711



2109374



Please Note: Flow rate will be dictated by installation configurations.
 Please ensure to check the appropriate flow restrictor information if applicable.
 *Please refer to website for full warranty details.

FREEPHONE: 0800 195 1602 | FAX ORDERS: 08444 068 690 | EMAIL: SALES@UK.METHVEN.COM

methven.com

THE INFORMATION ON THIS SPECIFICATION DOCUMENT WAS CORRECT AT THE DATE OF ISSUE. SOME VARIATION MAY OCCUR DUE TO THE MANUFACTURING TOLERANCES AND SITE SPECIFIC CONDITIONS.